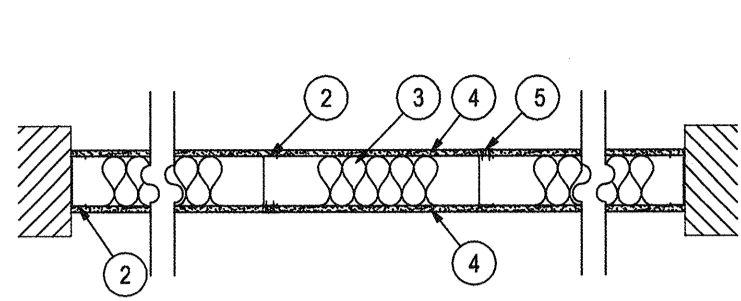


FIRE RESISTANCE RATINGS

U. L. Design No. U465
Nonbearing Wall Rating-1 Hr.



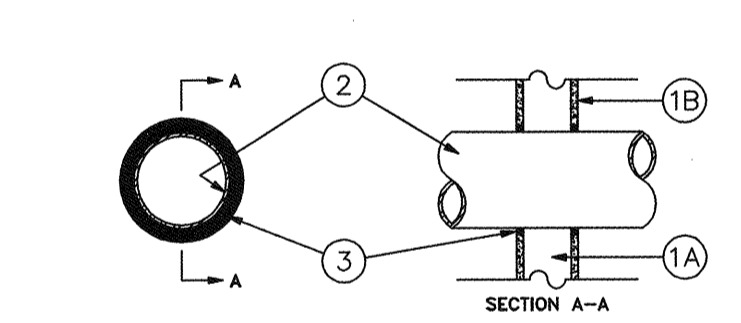
- Floor and Ceiling Runners (Not shown)**
Channel shaped runners, 3-5/8 in. wide (min.), 1-1/4 in. legs, formed from No. 25 MSG (min.) galv. steel, attached to floor and ceiling with fasteners spaced 24 in. OC max.
- Steel Studs**
Channel shaped, 3-5/8 in. wide (min.), 1-1/4 in. legs, 3/8 in. folded back returns, formed from No. 25 MSG (min.) galv. steel, spaced 24 in. OC max.
- Batts and Blankets (Optional)**
Mineral wool or glass fiber batts partially or completely filling stud cavity. See Batts and Blankets (BZJZ) Category for names of Classified companies.
- Wallboard, Gypsum***
5/8 in. thick, 4 ft. wide, attached to steel studs and floor and ceiling track with 1 in. long, Type S self-tapping steel screws spaced 8 in. OC along edges of board and 12 in. OC in the field of the board. Joints oriented vertically and staggered on opposite sides of the assembly. When attached to item 6 (furring channels), wallboard is screw attached to furring channels with 1 in. long, Type S steel screws spaced 12 in. OC.
Canadian Gypsum Company - Types AR, C, IP-X2, SCX, SHX, WRC, or WRX.
Continental Gypsum Company - Type CG-C
Eagle Gypsum Products - Type EG-C
G-P Gypsum Corp. - Types 5, 9, C, GFS-S, GFS-C
National Gypsum Co., Charlotte, NC - Types FSK-G, FSW-G
National Gypsum Co., Riyadh, Saudi Arabia - Types FR or WR
Pabco Gypsum Co. - Type PG-C
Republco Gypsum Co. - Type RG-C
Standard Gypsum Corp. - Type SG-C
Temple-Inland Forest Products Corp. - Type TP-S
United States Gypsum Co. - Types AR, C, IP-X2, SCX, SHX, WRC, or WRX.
Yesso Panamericano SA de CV - Types AR, C, IP-X2, SCX, SHX, WRC, or WRX.
Westroc Industries Ltd. - Type Westroc Fireboard.

- Wallboard, Gypsum* (As an alternate to item 4)**
Nom. 3/4 in. thick, 4 ft. wide, installed as described in item 4 with screw length increased to 1-1/4 in.
Canadian Gypsum Company - Type AR
United States Gypsum Co. - Type AR
Yesso Panamericano SA de CV - Type AR
- Wallboard, Gypsum* (As an alternate to items 4 and 4B)**
5/8 in. thick, installed as described in item 4. Joint covering (item 5) not required.
Canadian Gypsum Company - Type WSX
United States Gypsum Co. - Type WSX
Yesso Panamericano SA de CV - Type WSX

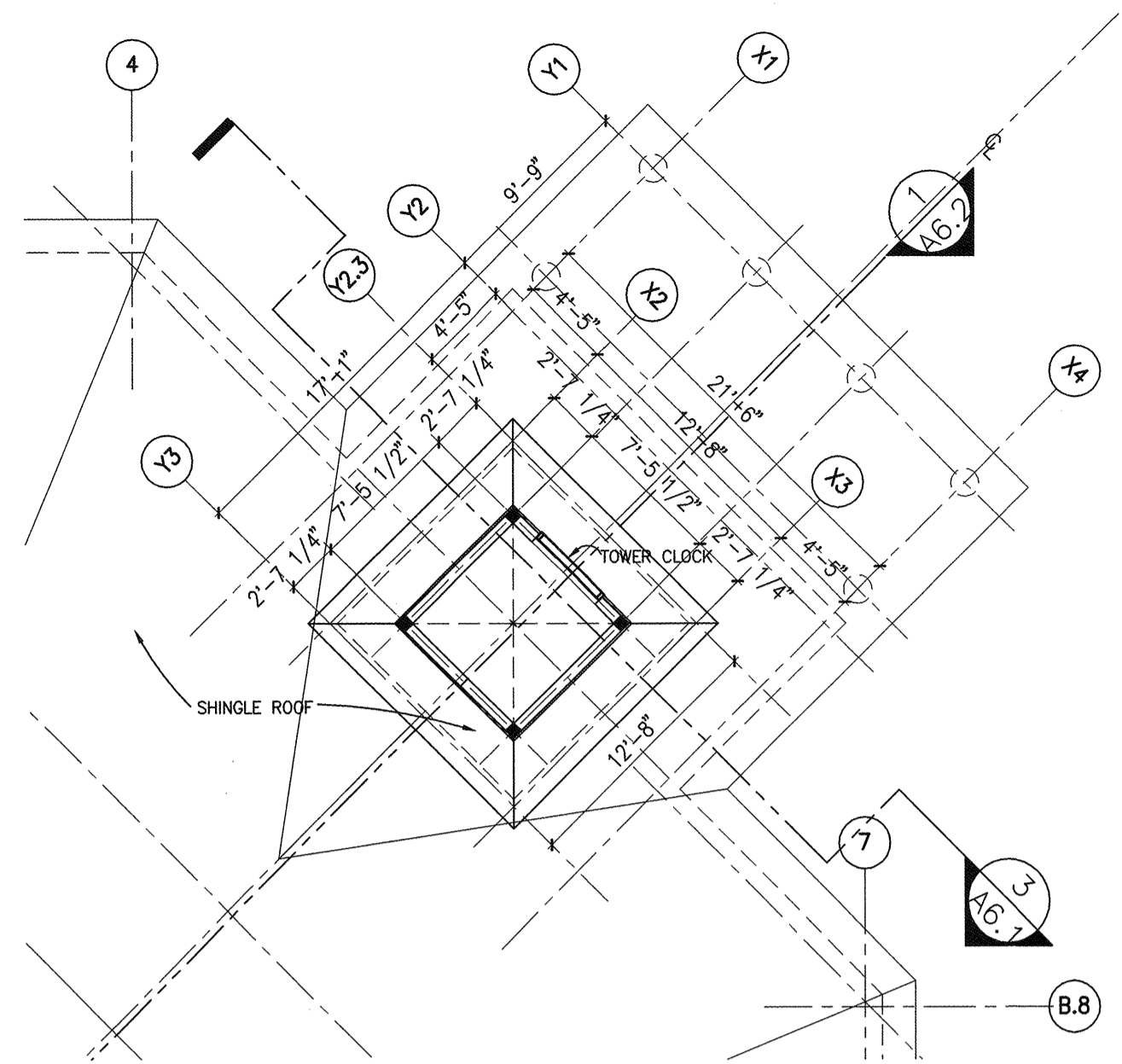
- Joint Tape and Compound**
Vinyl, dry or premixed joint compound, applied in two coats to joints and screw heads; paper tape, 2 in. wide, embedded in first layer of compound over all joints. As an alternate, nominal 3/32 in. thick gypsum veneer plaster may be applied to the entire surface of Classified veneer baseboard, joints reinforced.
- Furring Channels (Optional-Not shown)**
Resistant 25 MSG galv. steel furring channels spaced vertically max. 24 in. OC, flange portion attached to each intersecting stud with 1/2 in. long Type S-12 panhead steel screws.

U. L. System No. WL1052

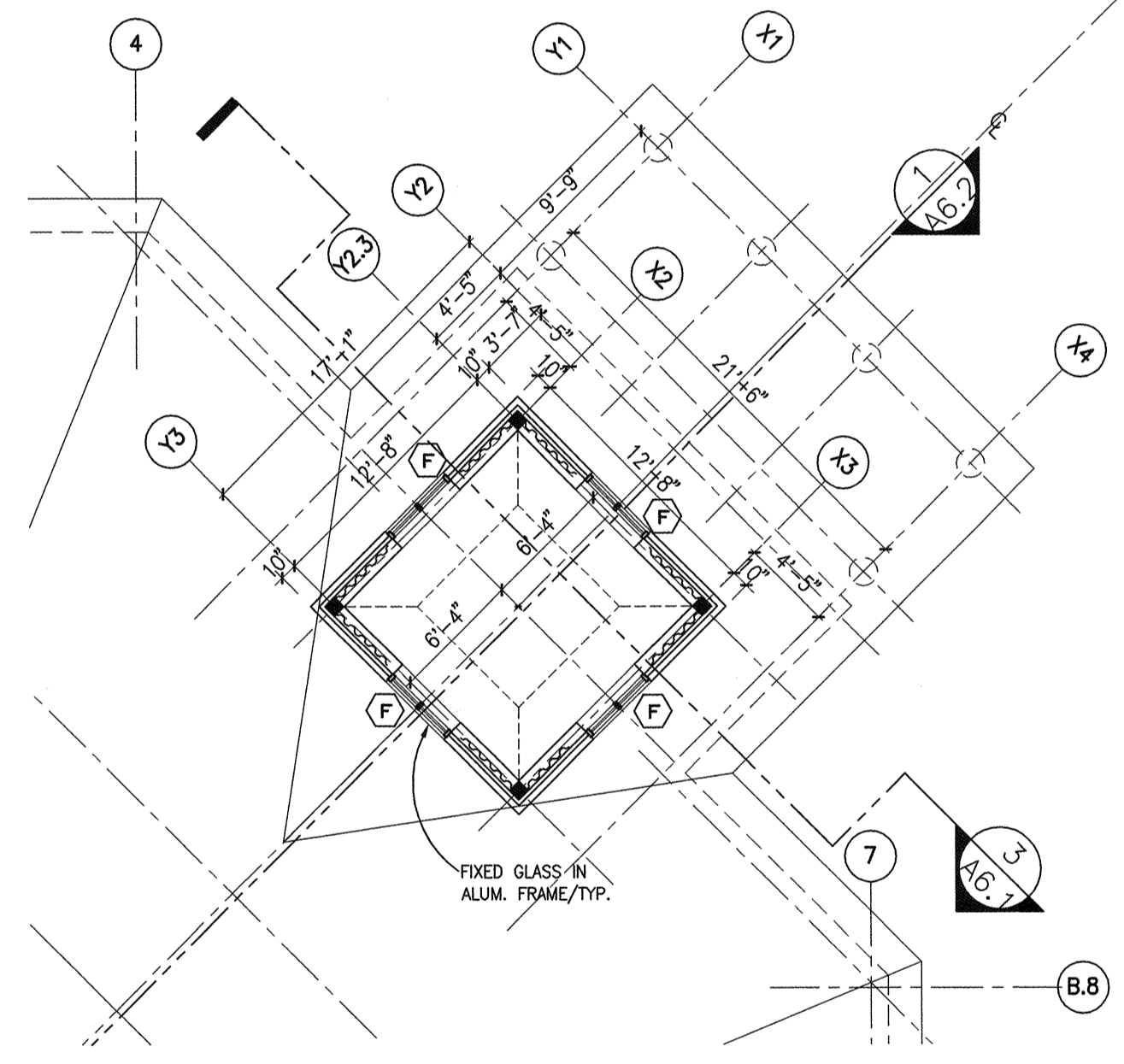
F Rating-1 Hr.
T Rating-0 Hr.



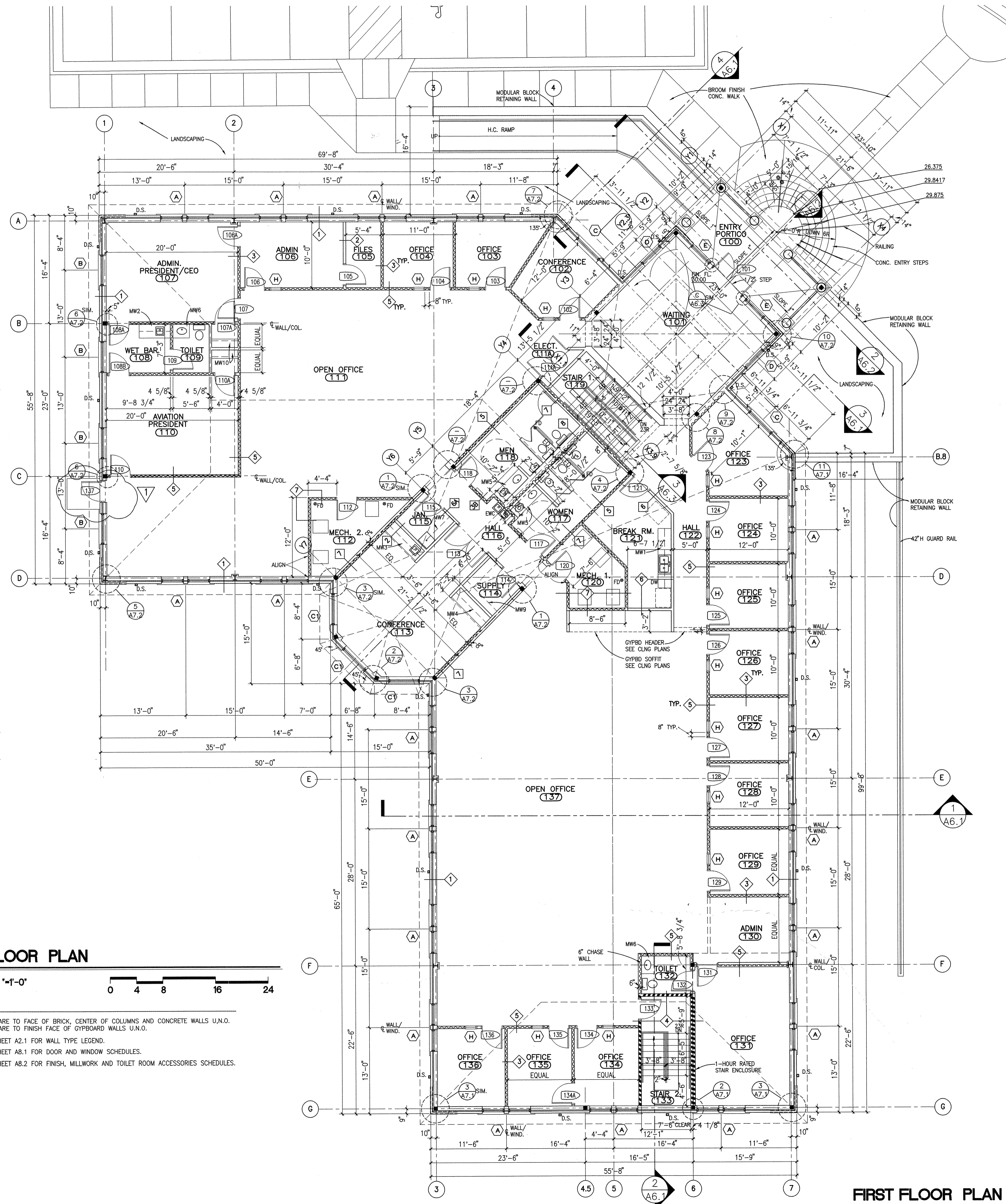
- Wall Assembly**
The fire-rated gypsum wallboard/stud wall assembly shall be constructed of the materials and in the manner specified in the individual U300 or U400 Series Wall Partition Designs in the U.L. Fire Resistance Directory and shall include the following construction features:
A. **Studs**
Wall framing may consist of either wood studs or steel channel studs. Wood studs to consist of nom. 2x4 in. lumber spaced 16 in. OC. Steel studs to be min. 2-1/2 in. wide and spaced max. 24 in. OC.
B. **Wallboard, Gypsum***
One layer of 5/8 in. thick gypsum wallboard, as specified in the individual Wall and Partition Design. Max. diam. of opening is 12 in.
- Through Penetrants**
One metallic pipe, conduit or tubing to be centered within the freestop system. Pipe, conduit or tubing to be rigidly supported on both sides of wall assembly. An annular space of min. 1/4 in. to max. 1-1/4 in. is required within the freestop system. The following types and sizes of metallic pipes, conduit or tubing may be used:
A. **Steel Pipe**
Nom. 10 in. diam. (or smaller) Schedule 10 (or heavier) steel pipe
B. **Conduit**
Nom. 4 in. diam. (or smaller) steel electrical metallic tubing or steel conduit.
C. **Copper Tubing**
Nom. 4 in. diam. (or smaller) Type L (or heavier) copper tubing.
D. **Copper Pipe**
Nom. 4 in. diam. (or smaller) Regular (or heavier) copper pipe.
- Fill, Void or Cavity Material-Selant**
Min. 5/8 in. thickness of fill material applied within the annulus, flush with both surfaces of the wall.
Hill Construction Chemicals, Inc.-FS601 Selant
* Bearing the U.L. Classification Marking.



PARTIAL PLAN AT CUPOLA ABOVE WAITING 101
SCALE: 1/8" = 1'-0"



PARTIAL PLAN ABOVE WAITING 101
SCALE: 1/8" = 1'-0"



FIRST FLOOR PLAN
SCALE: 1/8" = 1'-0"

- NOTES:
- DIMENSIONS ARE TO FACE OF BRICK, CENTER OF COLUMNS AND CONCRETE WALLS U.N.O. DIMENSIONS ARE TO FINISH FACE OF GYPSUM WALLS U.N.O.
 - REFER TO SHEET A2.1 FOR WALL TYPE LEGEND.
 - REFER TO SHEET A8.1 FOR DOOR AND WINDOW SCHEDULES.
 - REFER TO SHEET A8.2 FOR FINISH, MILLWORK AND TOILET ROOM ACCESSORIES SCHEDULES.

REVISION / ISSUE	
DATE: 07-01-05	REVISION
DATE: 08-03-05	REVISION
DATE: 11-07-05	REVISION
DATE: 3-21-06	REVISION
DATE: 4-24-06	REVISION

Lola Budde & ASSOCIATES
ARCHITECTURE
INTERIOR DESIGN
PROJECT MANAGEMENT
CORPORATE RELOCATION

5076 Winters Chapel Road
Atlanta, Georgia 30360
(770) 396-3207 Fax 396-9597
www.lolabudde.com

I.A. Properties, Inc.
500 Plantation Park Drive, Walton County, Ga.

FIRST FLOOR PLAN

JOB NUMBER	04239
CAD FILE NUMBER	04239-A2s.dwg
DRAWN	RRM
CHECKED	RLB
DATE	4-27-05
DRAWING NUMBER	A-2.2